



RMYCOMM3 – 26800(USB) SOFTWARE UTILITY

PN: 26852

08/19/2013

This utility program is used to upload and download user programs to the 26800(USB) Meteorological Translator. User programs, screens and data headers can easily be created, printed, saved to a folder and transferred to or from the 26800(USB) system via a USB data cable connected from the PC to the USB port at the rear of the 26800(USB) system.

To transfer a pre-existing user program from the PC to the 26800(USB), the Young **RMYcomm3** (v3.03 and above) utility software is provided. Below are a series of instructions and screen shots showing the sequence of operations necessary to successfully access a user program and download it into the 26800(USB) unit.

NOTE: If you have not already done so, install the software utility using the install files called “**Setup RMYComm3.exe**”. This will install the software on your windows system and place a program icon on the desktop for easy access.

- 1- Power on the 26800(USB) system and connect one end of the USB data cable to the USB port at the PC. Connect the other end of the data cable to the USB port located at the rear of the 26800(USB) unit.
- 2- Allow the unit to automatically register to windows and allow the necessary USB drivers to load. Depending on the version of windows this may take a couple of minutes to complete. Windows should then display a message indicating successful installation and the hardware it is now ready to use.
- 3- Launch the RMYcomm3.exe utility program from the PC desktop icon. The software should indicate in the lower status window “**YOUNG 26800 USB: Port Open**”. You are now communicating with the 26800(USB) system (*Figure-1*).
- 4- From the <File> menu drop-down, choose <Open Setup/Screens/Pgm File> (*Figure-2*) and a file dialog box will appear (*Figure-3*). **NOTE:** If communications is lost between the PC and the translator due to the disconnection of the data cable or loss of power, communications can be easily re-established by selecting <Reconnect USB> from the file drop-down menu (*Figure-2*).
- 5- Navigate to the desired user program file (*.ssp) and click <Open> to retrieve the program. The user program will now display within the <User Program> tab window (*Figure-4*).
- 6- From the main menu, select <Commands>, select <Send Setup/Screens/Pgm> to initiate the file transfer to the 26800(USB) (*Figure-5*) and confirm the send operation (*Figure-6*).
- 7- Once the user program successfully downloads, the user program will begin running.

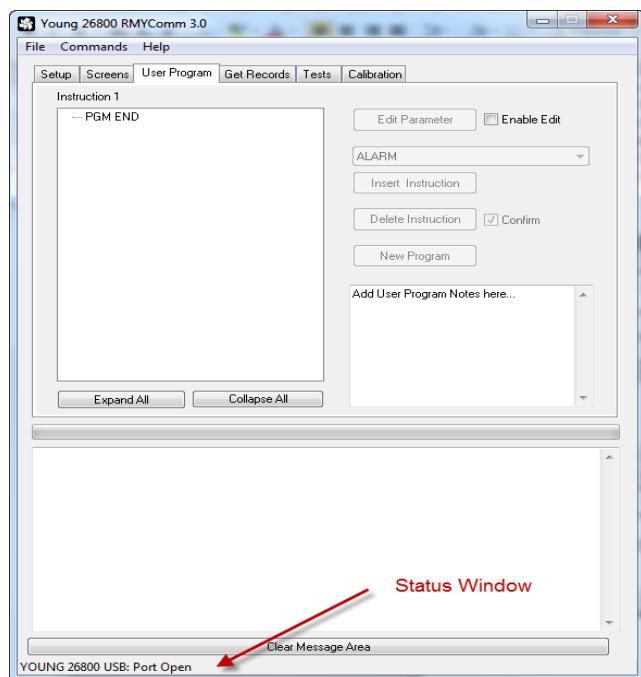


Figure-1

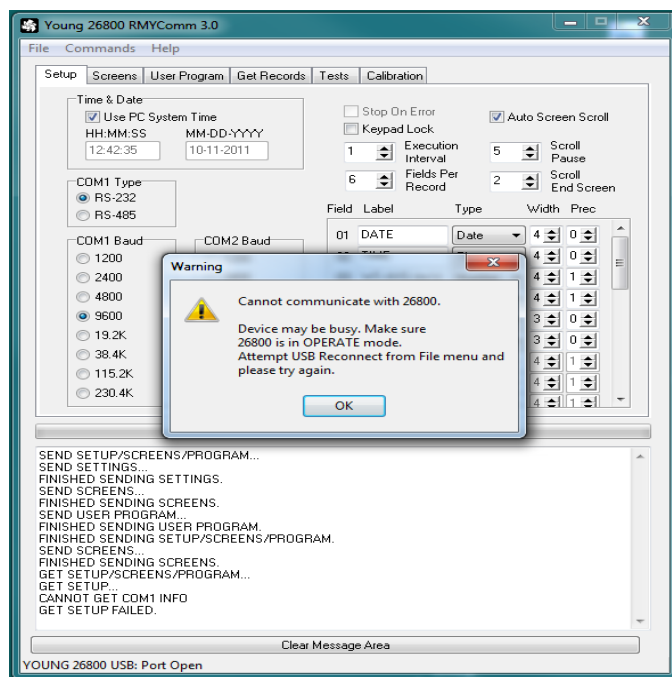


Figure-2



RMYCOMM3 – 26800(USB) SOFTWARE UTILITY

PN: 26852

08/19/2013

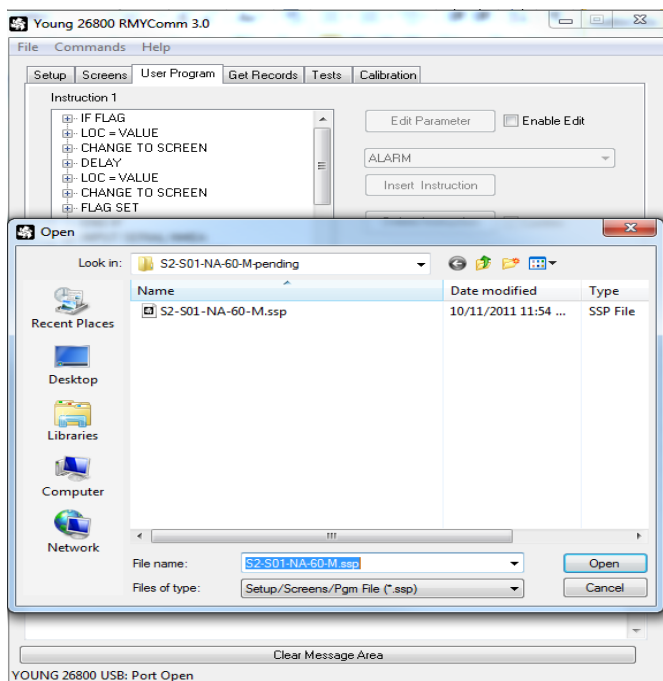


Figure-3

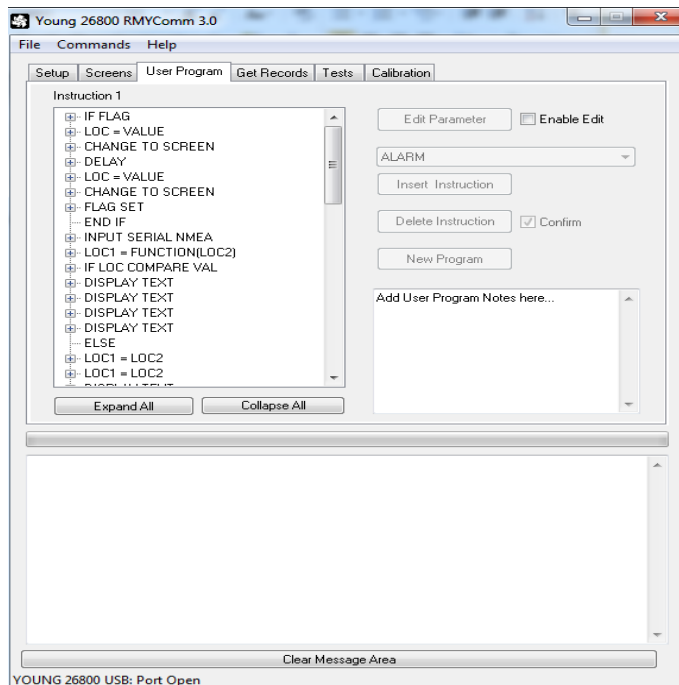


Figure-4

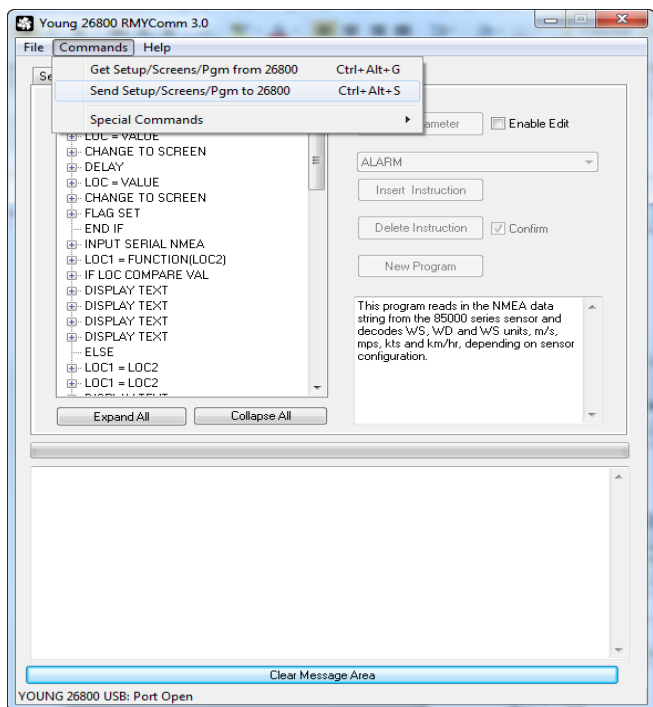


Figure-5

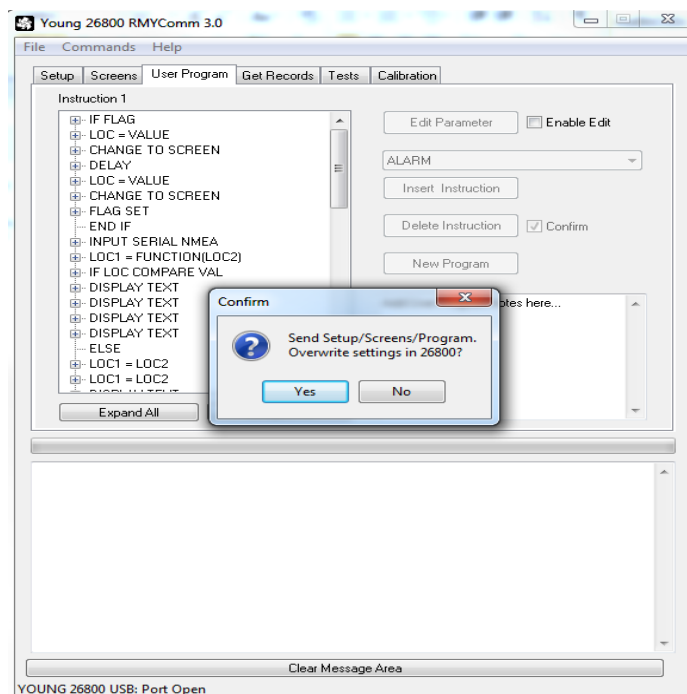


Figure-6