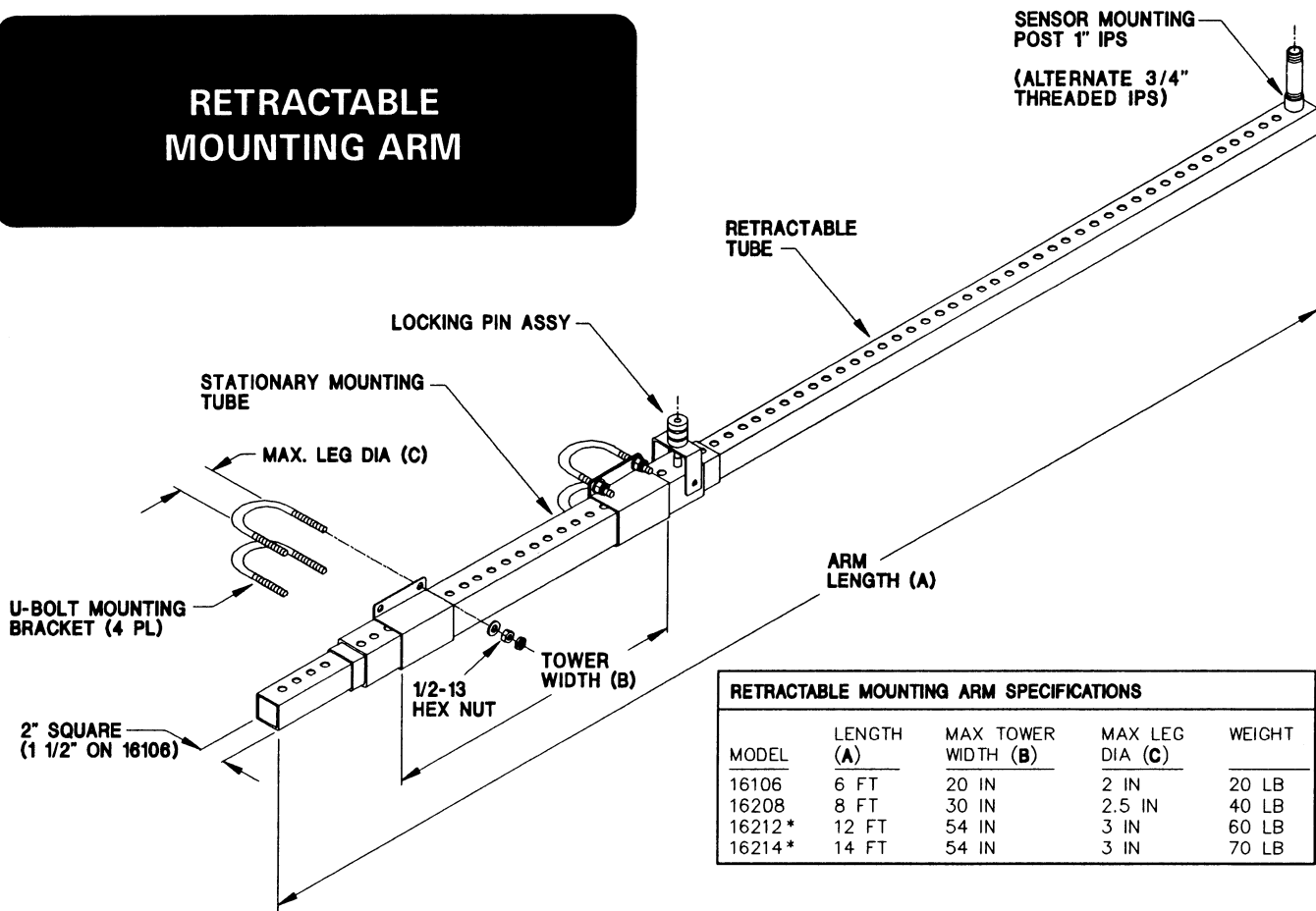


# RETRACTABLE MOUNTING ARM



**Retractable Mounting Arm.** Galvanized steel telescoping arm provided with universal mounting brackets for bolting to side of tower. Allows rigid mounting of instrument away from tower to minimize effect of tower structure on wind measurements. Retracts for installation and service of sensor. Includes 1" I.P.S. mounting post for sensor.



**Retractable mounting arm - 6 ft (1.8 M)**  
For small towers to 20" side ..... **Model 16106A**

**Retractable Mounting Arm - 8 ft (2.4M)**  
For towers to 30" side ..... **Model 16208A**

**Retractable Mounting Arm - 12 ft (3.6M)**  
For larger towers to 54" side ..... **\*Model 16212A**

**Retractable Mounting Arm - 14 ft (4.2M)**  
Extra length for towers to 54" side ... **\*Model 16214A**

**Alternate Sensor Mounting Post:**  
3/4" IPS threaded ..... **Add suffix "P"**

\* These items must be shipped air or motor freight



**R. M. YOUNG COMPANY**  
2801 Aero-Park Drive  
Traverse City, MI 49684 U.S.A.

TEL (616) 946-3980 FAX (616) 946-4772